

KINLOCH

• MANOR & VILLAS •

TAIPO, NEW ZEALAND

Your Wedding

CREATING YOUR PERFECT DAY

Once in a lifetime you meet somebody you want to share the rest of your life with.

Let us take the stress off this special day and indulge in the Life of Luxury that The Kinloch Manor & Villas can deliver.



CEREMONY

If you choose an outdoor ceremony, the rugged landscape, manicured Kinloch Club Golf course & impressive Lake Taupo creating a natural and unique backdrop.

Indoor ceremonies have the choice of our "great hall" or lounge areas, all set with luxurious furnishings & a grand interior tastefully designed by the award winning Virginia Fisher.



YOUR AFTERNOON

Following your ceremony, your guests will be free to enjoy our impressive modern uber-luxury lodge, with stunning schist stone exteriors feature dramatic framed vistas of the sensational views of the golf course and the ever-changing Lake Taupo.

A commanding gateway entrance to the lodge leads to the lush central courtyard to greet you and your guests, with an outdoor fireplace and reflection pool.

On arriving into the "Great Room" pictured), a baronial feel or lush textures - Velvet, Fox Fur, brass and copper then lead to the Bar area, which harks back to a time of leather and rock surfaces, cowhide, goat fur and burnt wood flooring is masculine and intense. Cocktails and Canapes can be served in variety of locations throughout the lodge.





RECEPTION

Our stunning dining room is the ideal place to hold your reception. For groups of 40 to 70 guests up to larger groups of over 100 guests in an outdoor marquee. For very intimate weddings our 'Den' is perfect for up to 10 guests.

Views are to die for as you watch the sunset over the Western Bays of Lake Taupo to the National Park.

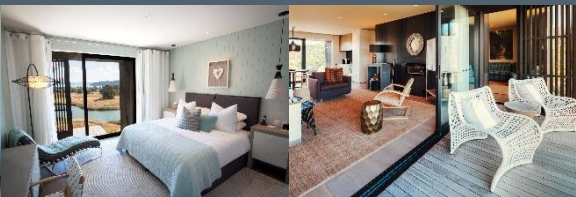
Our experienced and professional in-house hospitality staff will take care of your every need in a friendly, non-intrusive way ensuring that your guests have the most amazing time with us. The adjoining 'Grand Hall' is the perfect place to have your entertainment set up for the first dance and Cake cutting. This goes very well with our Cheese Table to unwind into the later hours of your evening.





ACCOMMODATION

You and your guests will be enchanted by our luxury accommodation. One and two/three-bedroom villas, which are 'quiet' in design and harmonize with the magnificent natural setting. Dark stained exteriors lead from outdoor patios with furnished terraces to interiors of calm and sophistication. Experience expansive views of our golf course and lake, carbon neutral fireplaces, oak floors, sumptuous handmade NZ rugs and luxurious bathrooms with stand-alone tubs in all ensuites, enveloping you with a feeling of piece.



8 x Manor Suites

8 x One-bedroom Manor Residence

2 x Two-bedroom Manor Residence

Total 40 in-house guests



DINING

We have an 'Estate to Plate' philosophy with the majority of our produce we use either bred or grown onsite or at our sister lodge Treetops. We have herds of Angus cattle & sheep here at Kinloch and our sister property Treetops Estate providing most venison or game meats we require. Seasonal vegetables and our Manuka honey also come from the property. Other produce is locally sourced.

Options of either hot or cold canapes, a 3-course or 5-course degustation menu's that we will create for your special day plus options for dedicated desert or cheese tables. Menus are always tailored to your wishes, bespoke and we arrange a sampling of the menu a few months out from the big day.

SIGNATURE WEDDING PACKAGE

Ideal for up to a 70-guest wedding reception in the Manors Dining Room (not available for Marque weddings). There is a minimum two-night buyout of the lodge and accommodations, and the Signature Wedding Package below is inclusive of 40 guests staying at the lodge two nights, with additional 30 guests at additional cost to make a total of 70 guests at the wedding celebration lunch or dinner.

Your special day with us at Kinloch Manor & Villas includes:

- Two nights' accommodation exclusive use of Kinloch Manor - 40 guests twin share
- Pre-wedding-night includes pre dinner drinks and cold canapes followed by 4 course meal for 40 in house guests
- Wedding reception dinner - a 3 course dinner for 40 in house guests *(with ability to increase numbers for wedding reception dinner to 70 in the lodge at additional cost)*
- Full gourmet breakfast served in the breakfast room both mornings for 40 in house guests
- Light lunch for 40 guests on wedding day
- Bottle of French Champagne and cheese platter in bride & groom suite on arrival (one)
- Late checkout for the wedding couple
- Menu and wine tasting for the Bridge and Groom arranged 2 months prior
- Wedding co-ordination up to 10 hours

Price from:

From 01 Oct 2023 to 31 March 2024 - NZ\$142,960

From 1 April to 30th Sept 2024 - NZ\$107,680

From 01 Oct 2024 to 31 March 2025 - NZ\$157,430

cont...SIGNATURE WEDDING PACKAGE

Not included in Wedding packages:

- All alcoholic and non-alcoholic beverages, except for pre-dinner house wine/beer with cold canapes night preceding wedding. Hot or cold canapes are additional for wedding reception dinner POA
- Maximum co-ordination by lodge of 10 hours is included in package once quote and deposit is paid - additional wedding co-ordination, and on wedding day charged at NZ \$150/\$160 per hour
- Post 11.30pm all staffing costs will be additional to wedding package costs - POA
- Two-night min lodge stay required 100% occupancy
- Drinks, Flowers, Theming, Celebrant, Entertainment, Photography, Marque and equipment hire

More:

- Payment: 50% of the total stay within seven days of booking wedding. The remaining 50% is due 90-60 days before arrival and can be made by bank transfer or credit card. 100% cancellation fee 60 days out. A valid credit card must be provided for beverage costs and will be preauthorized at \$100 per guest.
- Package not available 20th December to 6th January
- Subject to Availability - T&C Apply

ELOPEMENT PACKAGE

An exclusive and romantic setting for your intimate and private elopement, plus special touches to complete your perfect ceremony

Included in Elopement Package:

- Two nights' accommodation in a Residence Villa - Bride and Groom twin share
- Pre Wedding-Night - pre dinner drink and cold canapes followed by 4 course meal for Bride and Groom
- Wedding reception dinner - a 3 course dinner for Bride and Groom and at additional cost up to 8 guests
- Full gourmet breakfast for Bride and Groom two mornings
- Light lunch for Bride and Groom on wedding day
- Bottle of French Champagne and cheese platter in bride & groom suite on arrival (one)
- Late checkout for the wedding couple
- Wedding co-ordination up to 2 hours

Price from:

From 01 Oct 2023 to 31 March 2024 - NZ\$9350

From 1 April to 30th Sept 2024 - NZ\$7210

From 01 Oct 2024 to 31 March 2025 - NZ\$10,310

cont ...ELOPEMENT PACKAGE

Not included in Wedding packages:

- Hot canapes and all alcoholic and non-alcoholic beverages, except for pre-dinner drink with cold canapes - night preceding wedding .
- Hot or cold canapes and pre dinner drink on the second night, nor any alcoholic or non-alcoholic beverages - Wedding reception dinner.
- Maximum co-ordination by lodge of 2 hours is included in package once quote and deposit is paid - additional wedding co-ordination, and on wedding day charged at NZ \$150/\$160 per hour.
- Post 11.30pm all staffing costs will be additional to wedding package costs POA Drinks, Flowers, Theming, Celebrant, Entertainment, Photography

More:

- Payments - 50% of the total stay within seven days of booking wedding. The remaining 50% is due 90-60 days before arrival and can be made by bank transfer or credit card. 100% cancellation fee 60 days out. A valid credit card must be provided for beverage costs and will be preauthorized at \$100 per guest.
- Package not available 20th December to 6th January
- Subject to Availability - T&C Apply

*

Alternative Venue ...KINLOCH GOLF PAVILLION

Venue hire only, use of The Kinloch Golf Club Pavilion as a wedding venue up to 80 guests for the ceremony &/or reception. We can assist with catering, staffing, AV and wedding co-ordination or you can go freestyle, the choice is yours!

T&C Apply. NOTE: strict alcohol and security rules are required

Ask us more ...Cost: POA



Alternative Venue ...MARQUE

Kinloch Manor can host a Marque up to 220 guests for a sit down reception, located alongside the Lodge.

All catering and staffing is required to be provided by Kinloch Manor. We charge a two or three-night min Kinloch Manor exclusive use charge with the use of a Marque – this is a total buy-out of the lodge, and up to 40 guests can stay at the lodge, with breakfast and dinner included over this period. All costs for Marque, food and beverage costs, staffing, equipment hire ... is additional to the buy out fee.

T&C Apply. Subject to availability.

Ask us more ... Price on Application





CONTACT

261 Kinloch Road,
Kinloch,
Taupo 3377,
New Zealand

Phone: +64 7 377 8482

Email: reservations@thekinlochclub.com